

# **250 Water Street and the New York State Department of Environmental Conservation Brownfield Cleanup Program**

## **Draft Remedial Design Investigation Work Plan (RDIWP)**

250 Water Street, New York, New York

NYSDEC BCP Site No. C231127

January 13, 2022

# What is the Remedial Design Investigation Work Plan?

The Remedial Design Investigation (RDI) provides additional data to further inform the design/implementation of the remedial elements outlined in the approved Remedial Action Work Plan (RAWP)

# Remedial Design Investigation Objectives

To refine proposed remedial elements of the RAWP, which include:

- Evaluation of vapor controls during remedial excavation
- Evaluation of excavation depths required to achieve a Track 2 remedy in the petroleum-impacted area
- Obtaining a soil dataset for off-site waste disposal facilities
- Obtaining a groundwater dataset for future dewatering activities

# Remedial Design Investigation Proposed Scope of Work

## Air Quality Evaluation

- 3 test pits in targeted locations
- Air monitoring over a 2-hour period (per test pit)
- Restoration of each test pit to the original surface condition

## Waste Characterization

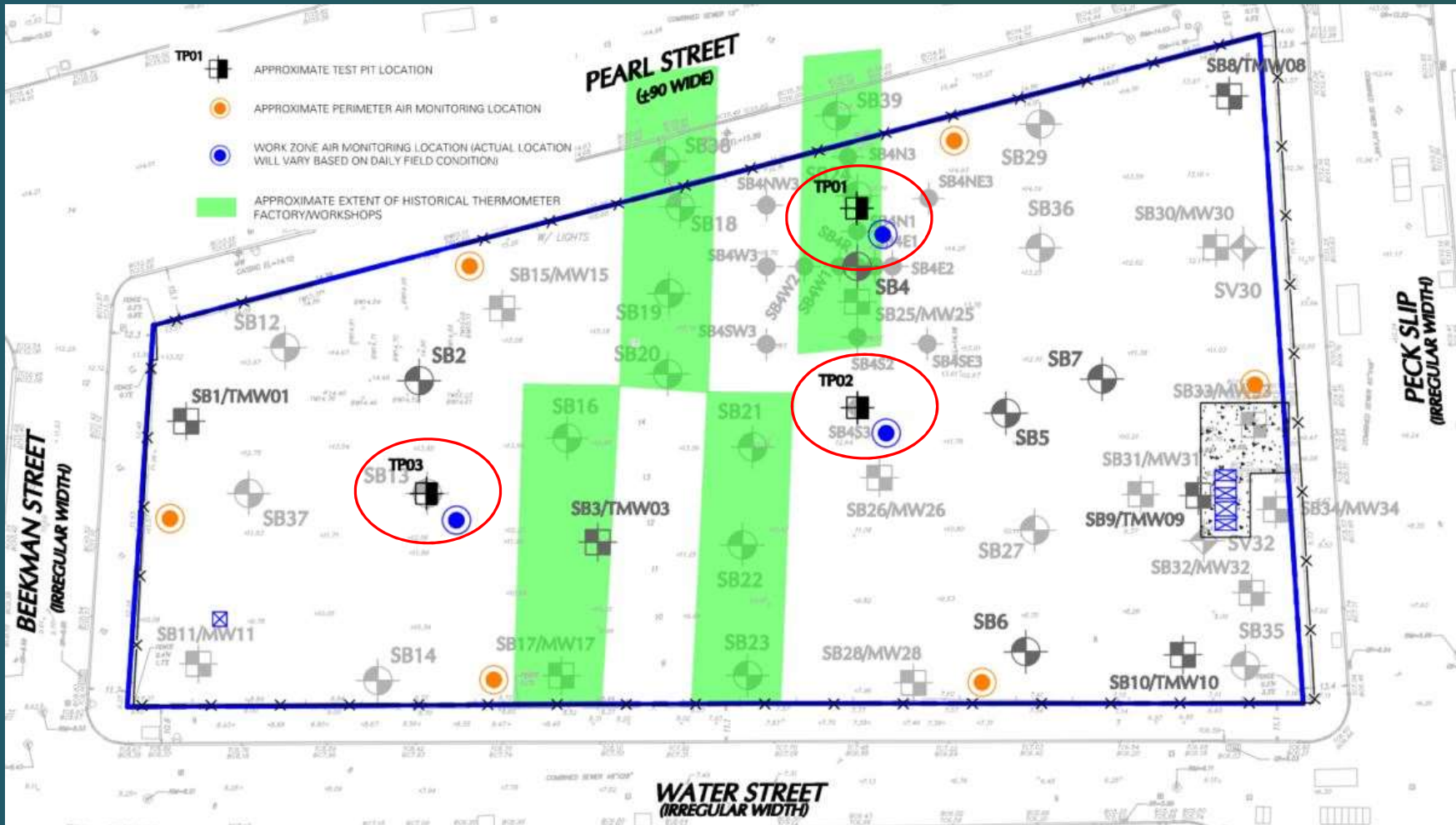
- 42 waste characterization soil borings and 52 soil samples
- 7 PCB delineation soil borings and 28 delineation soil samples
- Restoration of each boring to the original surface condition

## Groundwater Sampling

- 1 groundwater sample from an existing monitoring well to inform future dewatering, treatment and discharge

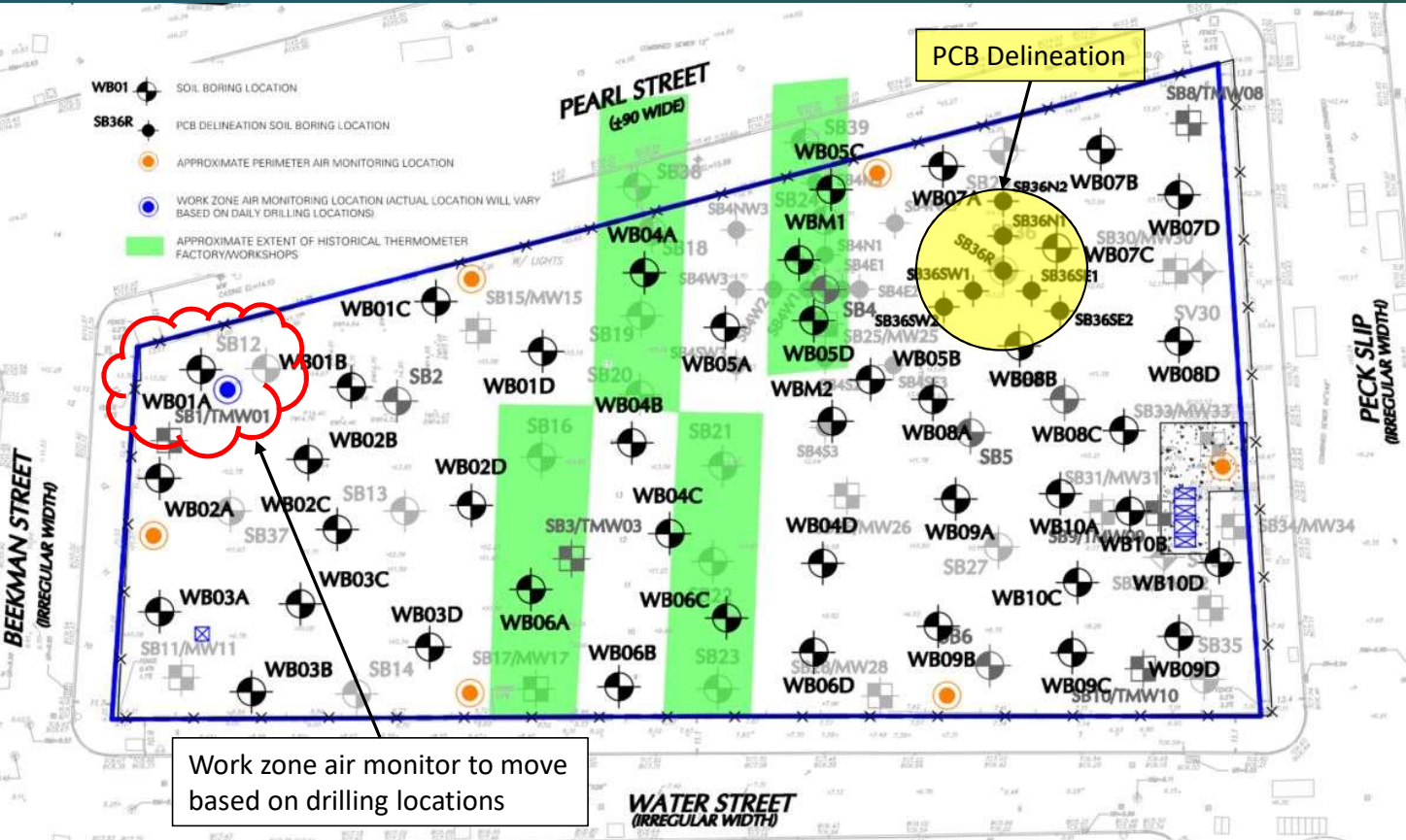


# Test Pits for Air Quality Evaluation During Excavation





# Soil Borings and Sampling for Waste Disposal

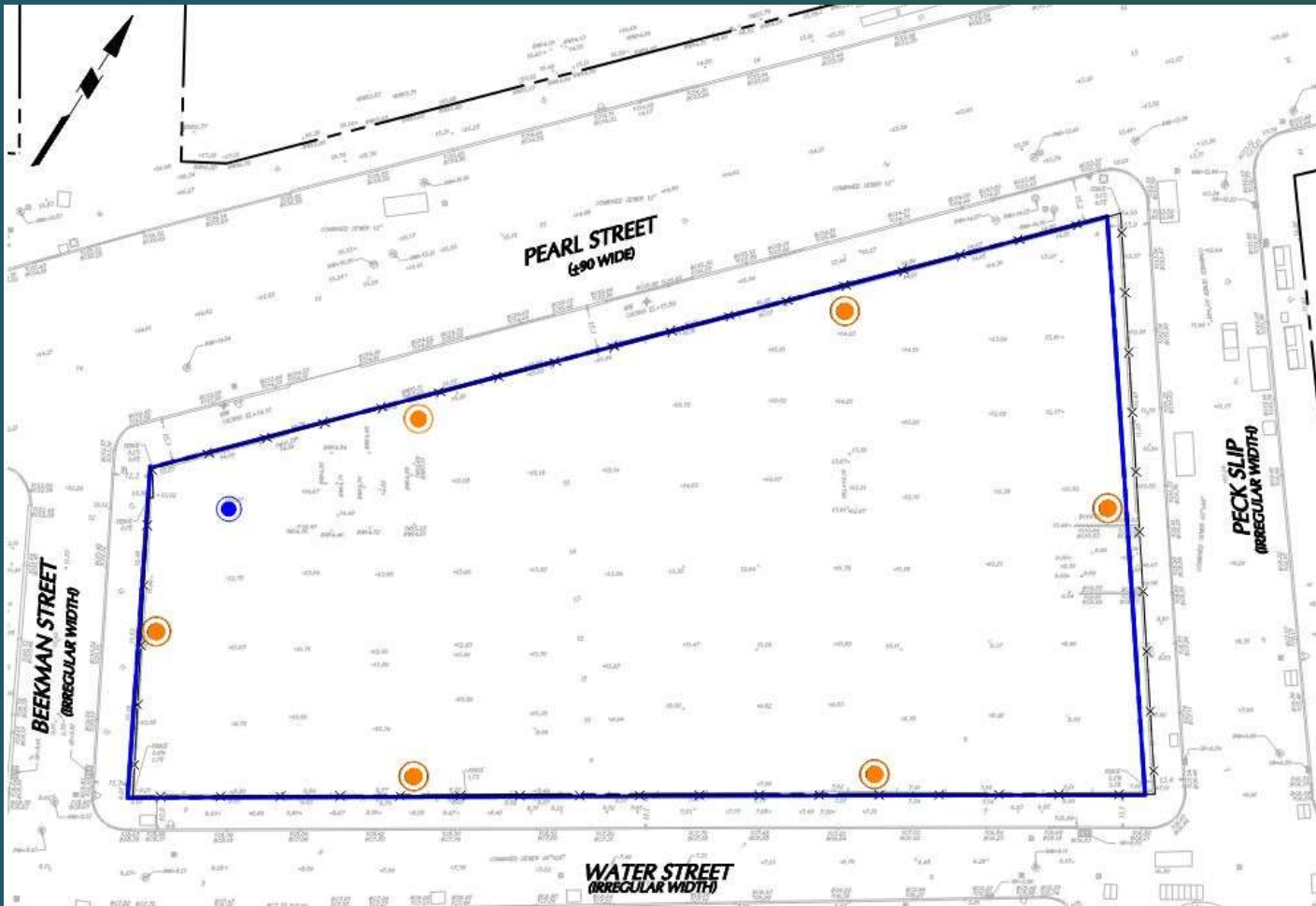


# Construction Health and Safety Plan





Protects on-site workers from accidents and exposures from the identified contaminated media.

1. Provides a detailed summary of anticipated work tasks with associated risk analyses and protective measures
2. Establishes key project personnel and health and safety personnel
3. Includes the Community Air Monitoring Program (CAMP) to be implemented during implementation of the IRMWP.

# Community Air Monitoring Program



## LEGEND

-  SITE BOUNDARY
-  APPROXIMATE LOCATION OF SITE FENCE
-  APPROXIMATE LOCATION OF CAMP STATION
-  APPROXIMATE LOCATION OF WORK ZONE MONITOR (ACTUAL LOCATION WILL VARY BASED ON DAILY DRILLING OR EXCAVATION LOCATION)





# Anticipated Schedule

- Draft RDIWP was shared with Community Consultants this week
- Community Consultant review through January 25, 2022
- RDI implementation upon DEC/DOH approval. Ideally:
  - Test pits - January 29th and 30th (Saturday/Sunday)
  - Soil borings - start on Monday, January 31<sup>st</sup> and will last about 10 days (assuming favorable data from the air quality evaluation)
- Preparation of the Remedial Design Investigation Memorandum (RDM) to summarize investigation results and findings

# Ongoing Community Engagement

- Daily reports and CAMP results will be posted on <https://250bcp.com>
- BCP Working Group
- Future Fact Sheets
  - Construction Notice
  - Engineering Report
  - Institutional/Engineering Controls